

**SunTek**<sup>®</sup>  
WINDOW FILMS

**TruCut**<sup>™</sup>  
User Guide



SunTek's Exclusive  
PPF and Window Tint  
Cutting Software

# Table of Contents

|  |              |
|--|--------------|
| Contact Information  | 3            |
| Copyright Notice   | 4            |
| <b>Introduction to TruCut™</b>                                   | <b>5</b>     |
| <b>Installing TruCut™</b>  | <b>6</b>     |
| Part 1 - Program Installation                                    | 6            |
| Part 2 - Plotter Installation                                    | 7-8          |
| Part 3 - Launching TruCut™                                       | 9            |
| <b>Working With TruCut™</b>                                      | <b>10</b>    |
| Selecting Film Width   | 10           |
| Selecting Database & Vehicle<br>Year, Make, and Model            | 11-12        |
| Nesting, Group Nesting & Cutting                                 | 13-14        |
| Pattern Edit   | 15-16        |
| Remove/Delete Sensor or Emblem                                   | 17-18        |
| <b>Outlining Pattern for Wrapping and<br/>Adding Relief Cuts</b> | <b>19-20</b> |
| <b>Save Pattern</b>  | <b>21</b>    |
| <b>Hot Key and Shortcuts</b>                                     | <b>22</b>    |
| Keyboard Shortcuts   | 22           |
| Function Keys  | 22           |



**For technical support please contact the following:**

|              |                       |
|--------------|-----------------------|
| Alan Agee    | 276.632.4991 ext. 430 |
| Josh Rodgers | 276.632.4991 ext. 428 |
| Andrew Joyce | 276.632.4991 ext. 431 |

### **Website Support:**

[www.suntektrucut.com](http://www.suntektrucut.com)

[www.suntekfilms.com](http://www.suntekfilms.com)

[www.commonwealthlaminating.com](http://www.commonwealthlaminating.com)

## Copyright Notice

No part of this publication may be reproduced mechanically or electronically or in any form without the prior written permission of Commonwealth Laminating & Coating, Inc (CLC). The software described in this manual is furnished under license and may only be used or copied in accordance with the terms of such license. The information in this manual is for informational use only, is subject to change without notice and should not be construed as a commitment of CLC. CLC assumes no responsibility or liability for any errors or inaccuracies that may appear in this document. TruCut™ and PPF™ are registered trademarks of Commonwealth Laminating & Coating, Inc.

## Installing TruCut™

An orange USB security dongle is provided with TruCut™ to prevent unauthorized use or pirating of software. This dongle is a flash drive that plugs into a standard USB port of the computer and is transparent to other applications. Only TruCut™ is aware of the device.



**Connect your  
orange dongle  
**BEFORE** installing  
your TruCut™  
software!**

## Policy On Lost Or Stolen Dongles

- The USB dongle provided with TruCut™ is your proof of purchase. If the dongle is lost or stolen, that is equivalent to losing the entire software package, and a new package of TruCut™ must be purchased.
- In the event of a damaged dongle that must be replaced, there is a nominal fee for EXCHANGING a new dongle for the older dongle, where the older dongle must be reclaimed by Commonwealth Laminating & Coating, Inc. (CLC).

## Part 1 - Program Installation

The following steps will walk you through the installation of TruCut™.

1. Insert the orange USB dongle into an open USB port on your computer.
2. Insert the TruCut™ DVD into your DVD-ROM drive. The Install Wizard should “start automatically”.

If the install wizard fails to start automatically, start the installation process manually:

- a) From the **Start** menu, choose **Run** to open the Run dialog box.
- b) Click **Browse** and locate the setup.exe file that is on the DVD in the DVD-ROM drive.
- c) Click **Open** to choose the setup.exe file.
- d) Click **OK** to close the **Run** dialog.

3. Proceed with each stage of the Install Wizard. Instructions are provided at each stage.
4. When the Install Wizard is complete, proceed to **Part 2 - Plotter Installation**.

## Part 2 - Plotter Installation

Now that TruCut™ has been installed, you are ready to install your plotter. The following steps are an overview of the plotter installation process.

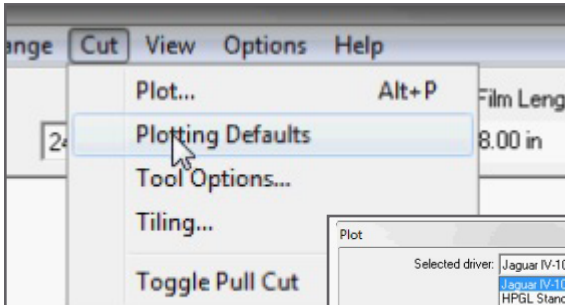
1. Left click on the “Cut” menu - refer to image 2.1
2. Left click “Plotting Defaults” - refer to image 2.1
3. In the “Select Driver Box” ensure that the correct plotter is selected - refer to image 2.2
4. Left click the “Setup” button - refer to image 2.2
5. Left click the “Port” tab - refer to image 2.3
6. In the “Port Location” box, select the appropriate port location for your plotter - refer to image 2.3

(If your plotter is a GCC the correct port will be at the bottom of the list. “Unknown USB\_USB0--”)

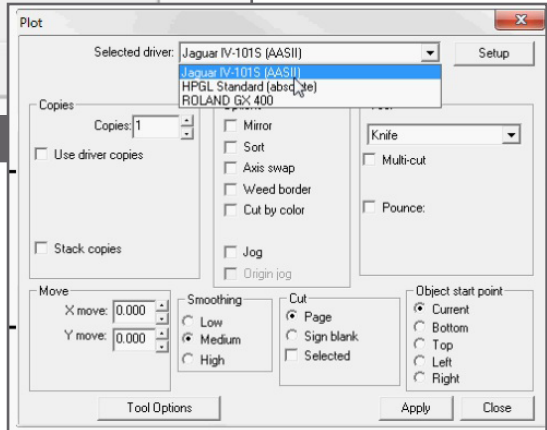
7. Left click the “Apply” then the “OK” buttons
8. In the “Cut” box, select “Sign Blank” only - refer to image 2.4
9. Left click the “Apply” then the “Close” buttons - refer to image 2.5
10. TruCut™ is now ready to cut

Note: For technical assistance, refer to contact information on page 3.

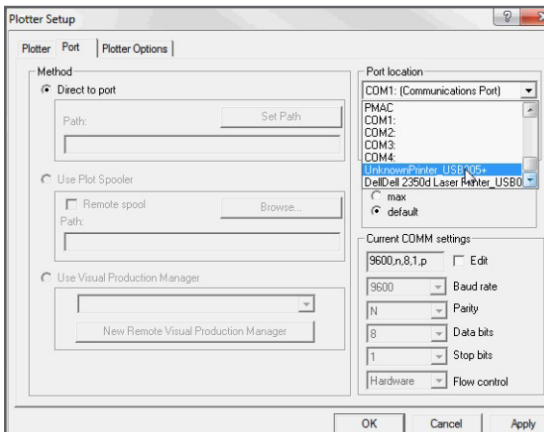
## Part 2 - Plotter Installation (continued)



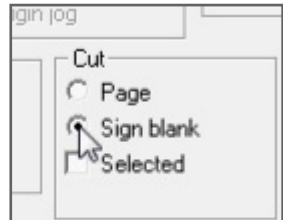
### 2.1 Plotting Defaults



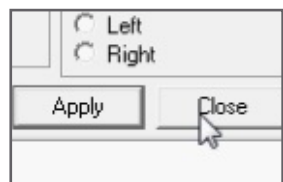
### 2.2 Select Driver



### 2.3 Port Tab & Port Location



### 2.4 Sign blank



### 2.5 Apply & Close



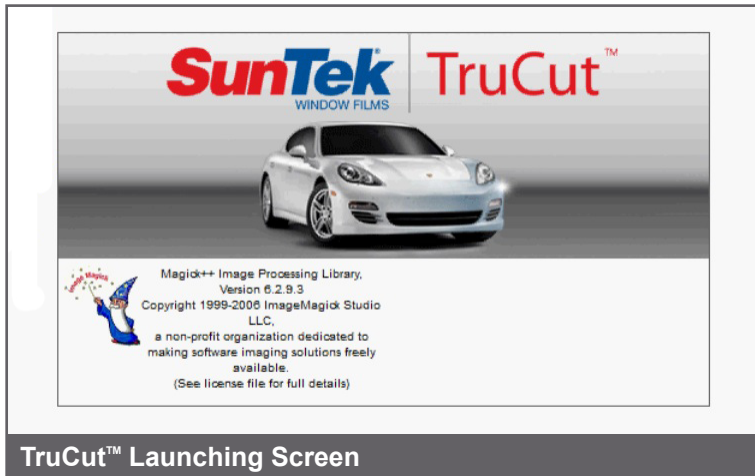
# Launching TruCut™

The following steps are an overview of launching TruCut™.

1. Click the TruCut™ icon on your desktop or select the TruCut™ software icon in your program menu.
2. Allow TruCut™ program 10-15 seconds to launch

TruCut™ database will automatically update during the launching process. This may occur on a weekly or monthly basis depending on the software update schedule. (Contact technical support regarding software update questions)

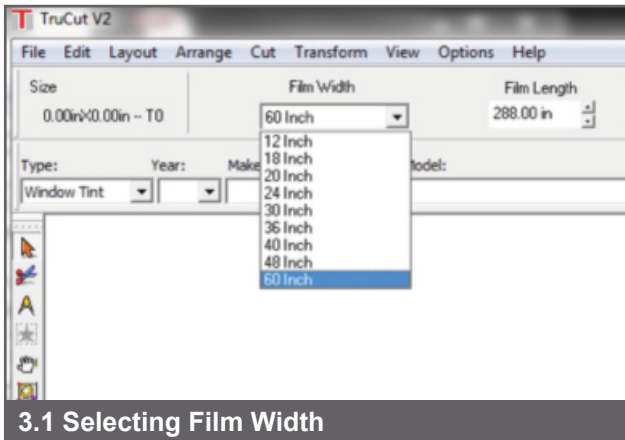
**\*Internet should always be connected**



# Selecting Film Width

The following steps are an overview of selecting the film width in TruCut™.

1. Click the “Film Width” drop down menu (refer to image 3.1) and select from the following options:
  - 12 inch
  - 18 inch
  - 20 inch
  - 24 inch
  - 30 inch
  - 36 inch
  - 40 inch
  - 48 inch
  - 60 inch

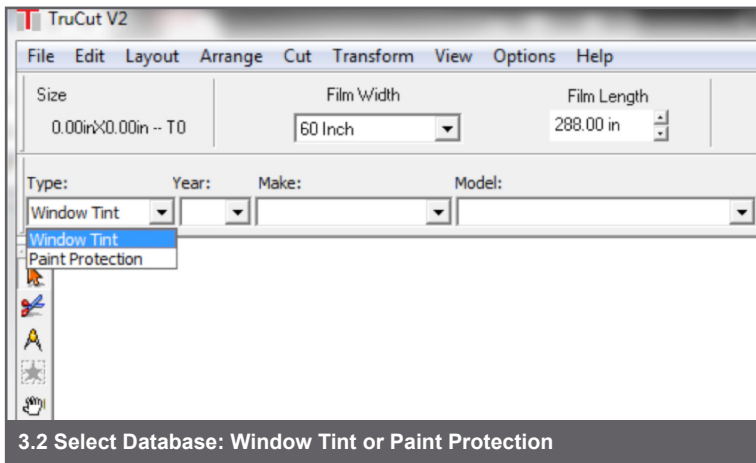


## Selecting Pattern Database and Vehicle: Year, Make, and Model

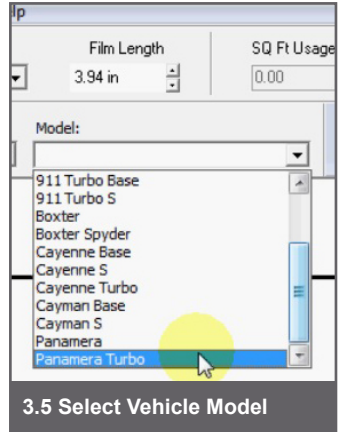
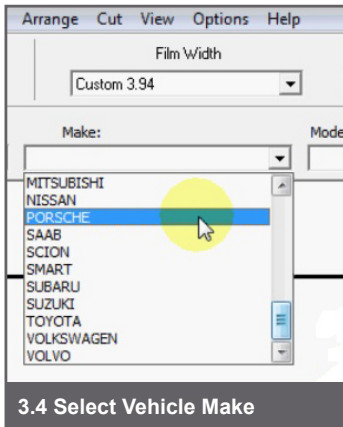
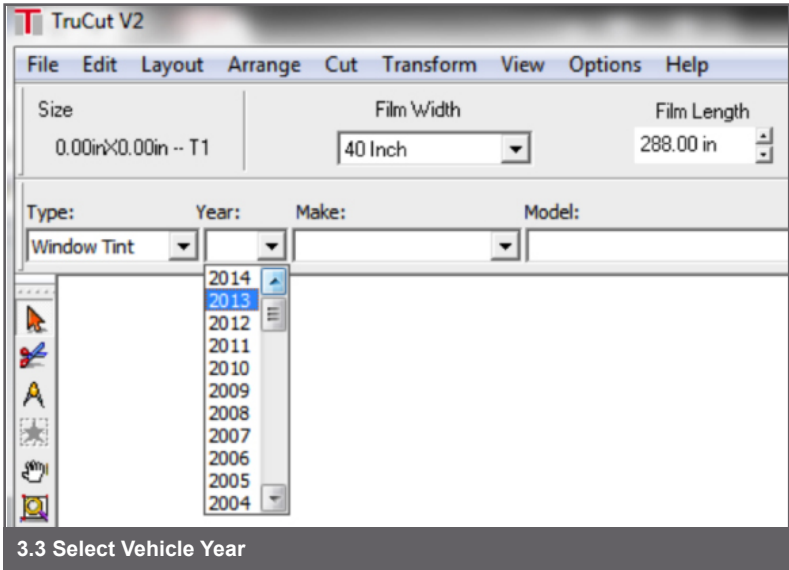
The following steps are an overview of selecting the desired Pattern Database and Vehicle: Year, Make, and Model in TruCut™.

1. First, choose your database type, either Window Tint or Paint Protection - refer to image 3.2
2. Click the “Year” drop down menu and select from the list of vehicle year options - refer to image 3.3
3. Click the “Make” drop down menu and select from the list of vehicle make options - refer to image 3.4
3. Click the “Model” drop down menu and select from the list of vehicle model options - refer to image 3.5

If your desired vehicle year, make, or model is not an option please contact technical support.



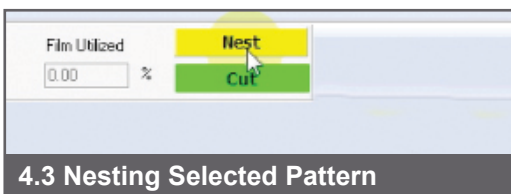
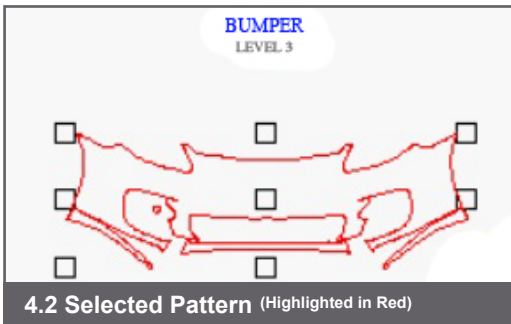
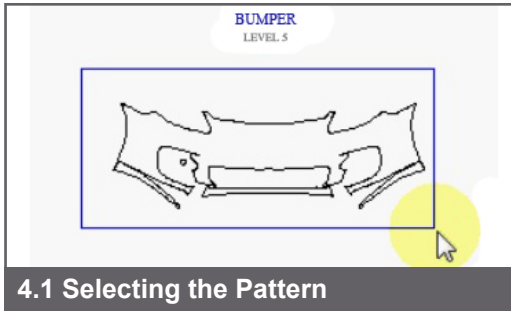
# Selecting Vehicle: Year, Make, and Model (continued)



# Nesting, Group Nesting & Cutting

The following steps are an overview of cutting a specific pattern in TruCut™.

1. Hold down the left button on your mouse and draw a box around your desired pattern - refer to image 4.1
2. Holding the “Shift Key” while holding the left button on your mouse will allow you to select multiple patterns
3. Pattern will highlight in RED - refer to image 4.2
4. Click the “Nest” or “Group” button - refer to image 4.3
5. Click “Cut” to begin the cutting process on the plotter



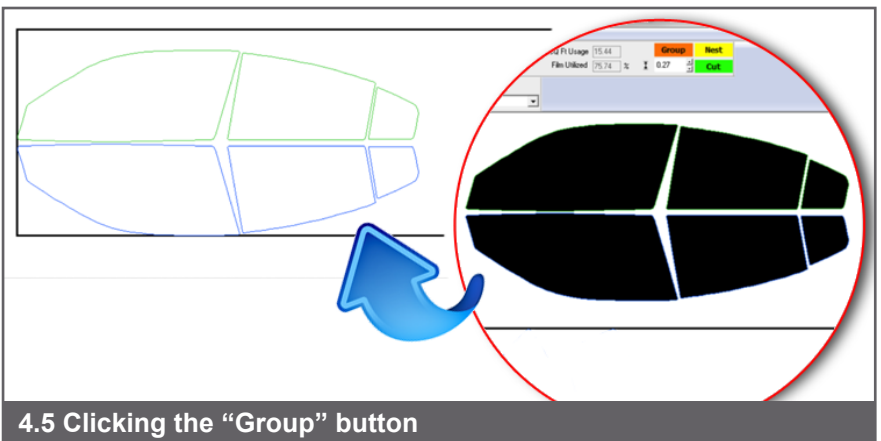
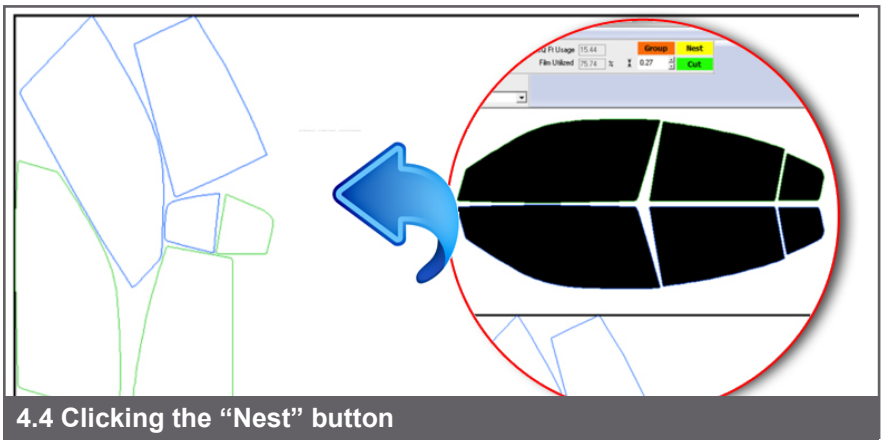
# Selecting a Specific Pattern, Nesting and Group Nesting

(continued)

## The difference between Nest and Group

**Nest:** When selecting the “Nest” button, patterns will group as close as possible, maximizing film efficiency and minimizing waste. Refer to image 4.4


**Group:** When selecting the “Group” button, patterns will group in the same layout seen in the pattern view (necessary for window tint patterns, due to orientation required for heat shrinking), keeping the same format. Refer to image 4.5



## Pattern Edit

The following steps are an overview of applying a pattern edit in TruCut™.

1. Click the pattern to edit. (pattern will turn RED)

A duplicate of the selected pattern should be created before editing. To make a duplicate, select the pattern and press the **Ctrl + D** keys on your keyboard or click the  Duplicate Icon. This places a duplicate directly on top of the existing pattern.

To see the changes that will take place between the two patterns, you will need to turn the fill color off. To do this, press the **Alt + S** keys on your keyboard.

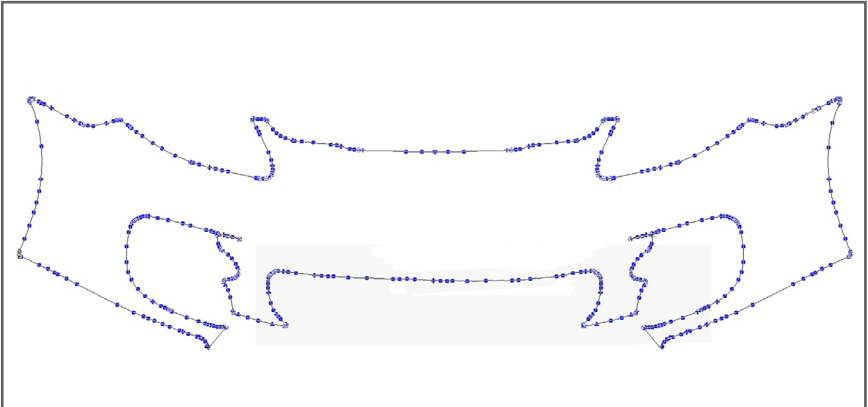
2. With the pattern duplicated and selected, push the letter “E” on your keyboard. (blue nodes will appear on selected pattern) - refer to image 5.1
3. Holding down the “Shift” key, draw a box using your mouse around the nodes you would like to edit. (nodes will turn RED when selected) - refer to image 5.2
4. Using the arrow keys on your keyboard, move the points in the direction of your desired edit - refer to image 5.3 & 5.4

Each press of the arrow key will move the selected nodes 1/16 of an inch.

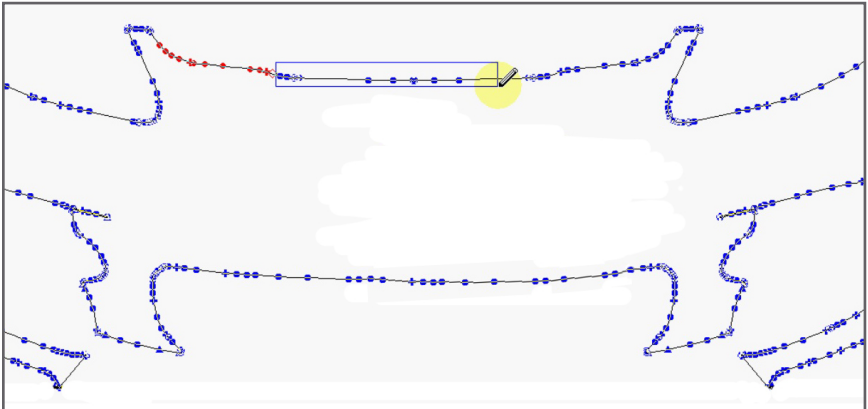
5. Delete nodes from a pattern by selecting the nodes and clicking “Delete” on your keyboard - refer to page #19
6. Click “Apply” at the top of your screen to save the edited patterns.

Clicking “Apply” will only save the pattern until the software is closed. To save the pattern edit for later use, select the “Save As” function and save to your desktop folder.

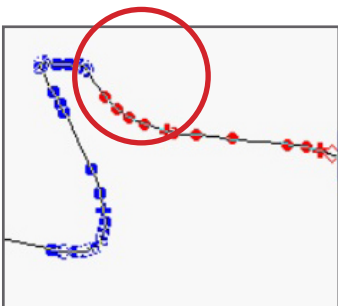
## Pattern Edit (continued)



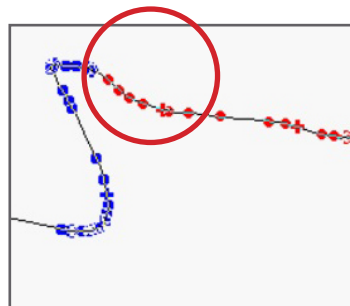
5.1 Push “E” on your keyboard to edit pattern



5.2 Use “Shift” on keyboard to select pattern points



5.3 Before Edit




5.4 After Edit



## Remove/Delete Sensors or Emblem From Pattern

The following steps are an overview of removing unwanted/unnecessary cut-outs from a pattern (i.e. emblems and sensors).

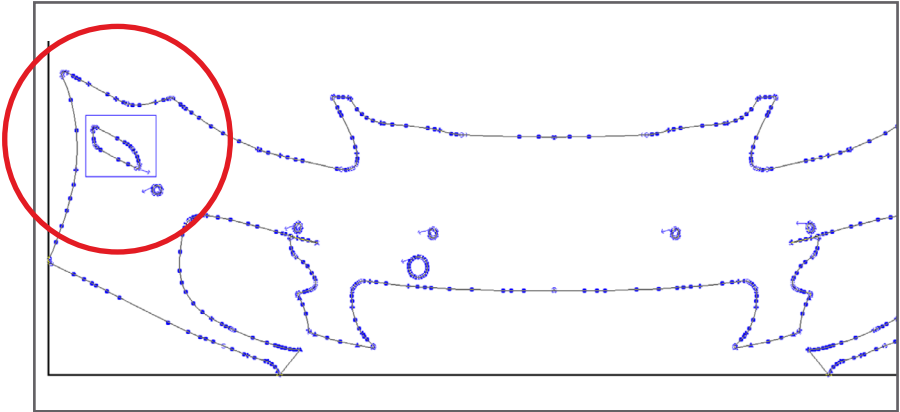
1. Click the pattern to edit. (pattern will turn RED)
2. With the pattern selected, push the letter “E” on your keyboard or click the  “Edit Path” icon. (blue nodes will appear on selected pattern)
3. Holding down the “Shift” key, draw a box using your mouse around the nodes you would like to edit. (nodes will turn RED when selected) - refer to image 6.1
4. Once all cut-outs are selected for deletion, press the delete key on your keyboard - refer to image 6.2
5. Click “Apply” to save the edited pattern - refer to image 6.3

Click the following links to view a video demonstrating the above steps in action:

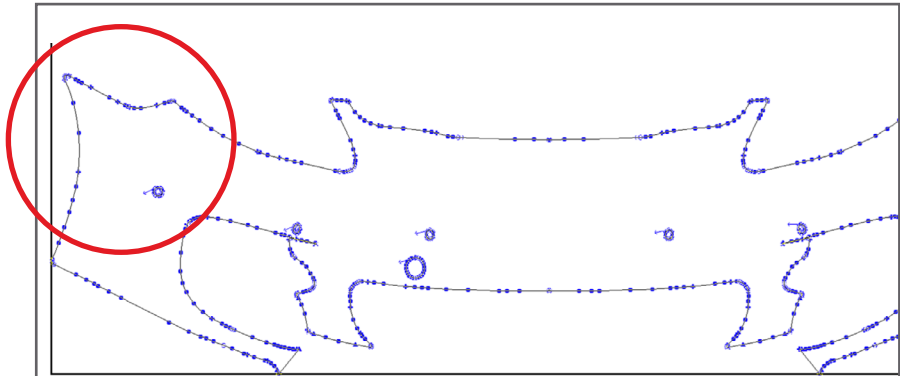
- Video A: Pattern Edit

- Video B: Remove or Delete Sensors

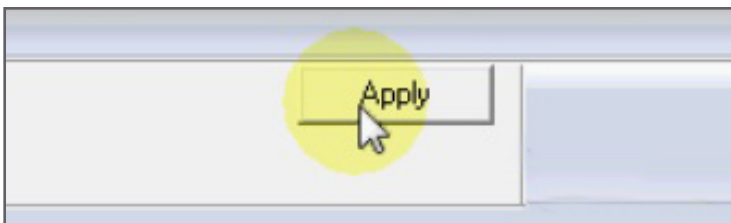
## Remove/Delete Sensors or Emblem From Pattern (continued)



6.1 Select area to delete







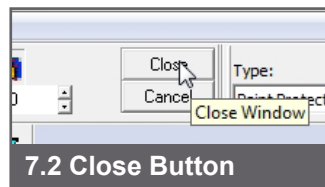
6.2 Push the “Delete” button on your keyboard





6.3 Click “Apply” to save pattern edit

# Outlining Pattern for Wrapping and Adding Relief Cuts

1. While holding the **Ctrl Key**, **Double Click** the desired pattern to unlock.
2. While holding the **Shift** and **Alt keys**, **Left click and Hold** while dragging the mouse. This will create a duplicate of the selected pattern that can be placed anywhere on the screen. Once the pattern is located on the screen where you wish the duplicate to be placed release all the buttons at once to create the duplicate.
3. If the pattern has holes that need to remain their current size follow this procedure, otherwise skip to step 4.
  - a). With the pattern selected click on the  **Break Path Icon**.
4. Select only the portion to be outlined and click the  **Duplicate Icon**.
5. Turn off the Show Fill by clicking the  **Show Fill Icon**.
6. With pattern selected click on the  **Outline Icon**.
7. In the Outline toolbar ensure that **Outline** is selected and Inline is deselected. In the Outline Thickness box enter the desired amount you wish to add to your pattern. Press enter then click the **Close Button** on the Outline Toolbar.  
- refer to image 7.1 & 7.2



## Outlining Pattern for Wrapping and Adding Relief Cuts (continued)

8. To add Relief cuts in the corners the path will need to be edited. With the pattern selected click on the  **Edit Path Icon**.
9. Using the zoom tool zoom into a corner that will require a relief cut.
10. Select nodes in the corner and delete so that the corner is flattened off but does not cross over into the original pattern. Now double click on the straight line to add a point. You can now drag this point close to the original patterns corner without crossing over. Your relief cut for that corner is done. Zoom to each corner that needs a relief cut and repeat this step. Once all relief cuts are made click the **Apply Button** on the Edit Path Toolbar.
11. Select the original pattern and press the Delete Key on the keyboard or the **Clear Icon**.
12. Select the edited pattern and any holes that were saved and click on the **Make Path Icon**.
13. Turn the Show Fill back on by clicking the  **Show Fill Icon**.

Click the following link to view a video demonstrating the above steps in action:

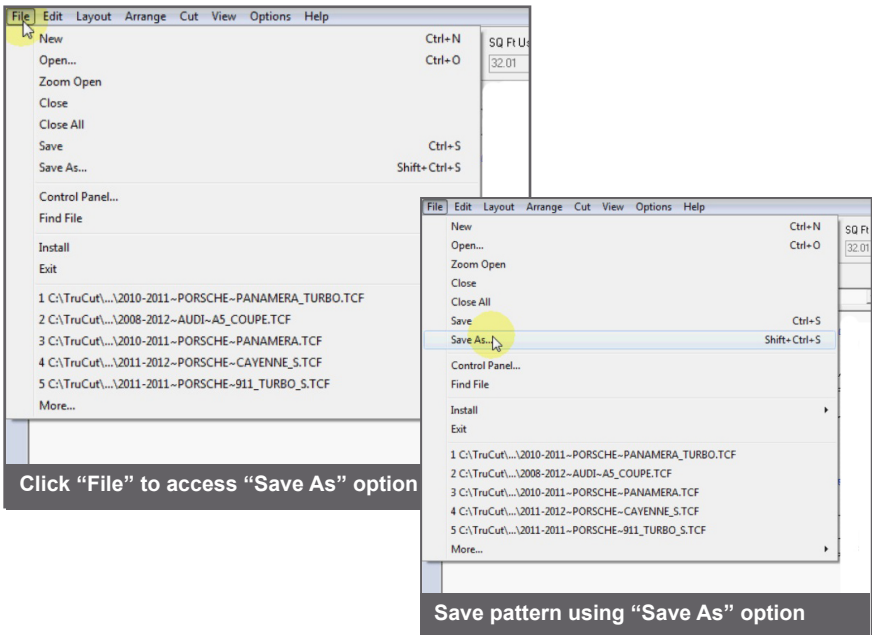
- Video C: Outlining a pattern

# Save Edited Pattern

The following steps are an overview of saving the edited pattern from TruCut™.

1. Click “File” on the top left navigation bar and select “Save As”
2. Name the file (your file name preference)
3. Select a folder destination to save the pattern file (default will be My Documents folder)
4. Click “Save”

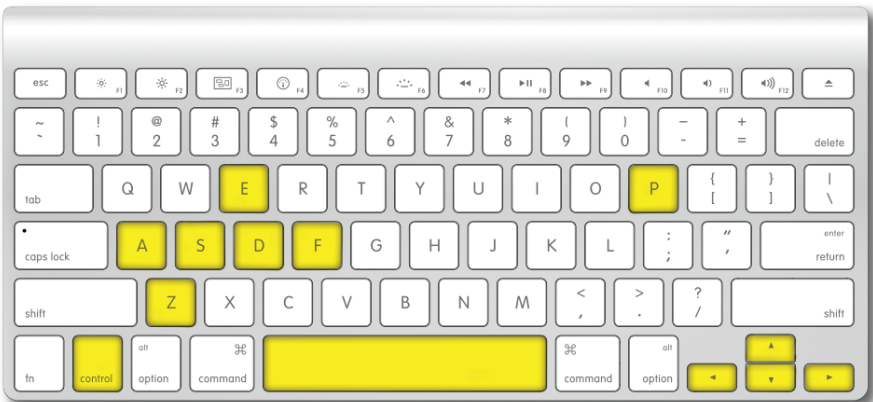
Easily access saved pattern for similar paint protection vehicle cuts. Simply open saved pattern and cut.



# TruCut™ Shortcut Keys

The following shortcut Keys allow quick and easy software function.

| KEY                 | FUNCTION                     |
|---------------------|------------------------------|
| Z                   | Zoom To Selected             |
| P                   | Pan State                    |
| Ctrl + A            | Select All                   |
| Ctrl + Double Click | Unlocks Selected Pattern     |
| Ctrl + D            | Duplicate                    |
| Ctrl + F            | Make Custom Film Width       |
| Alt + S             | Toggles Show Fill            |
| E                   | Edit Path                    |
| Space Bar           | Backs out of current command |





**COMMONWEALTH**  
LAMINATING & COATING, INC.

**[www.suntekfilms.com](http://www.suntekfilms.com)**

©2013  
Commonwealth Laminating & Coating, Inc.  
Made in the USA